

MONTHLY MEMBERSHIP PROGRESS REPORT

District 39 E

Results as of: 4/30/2026

GMT:

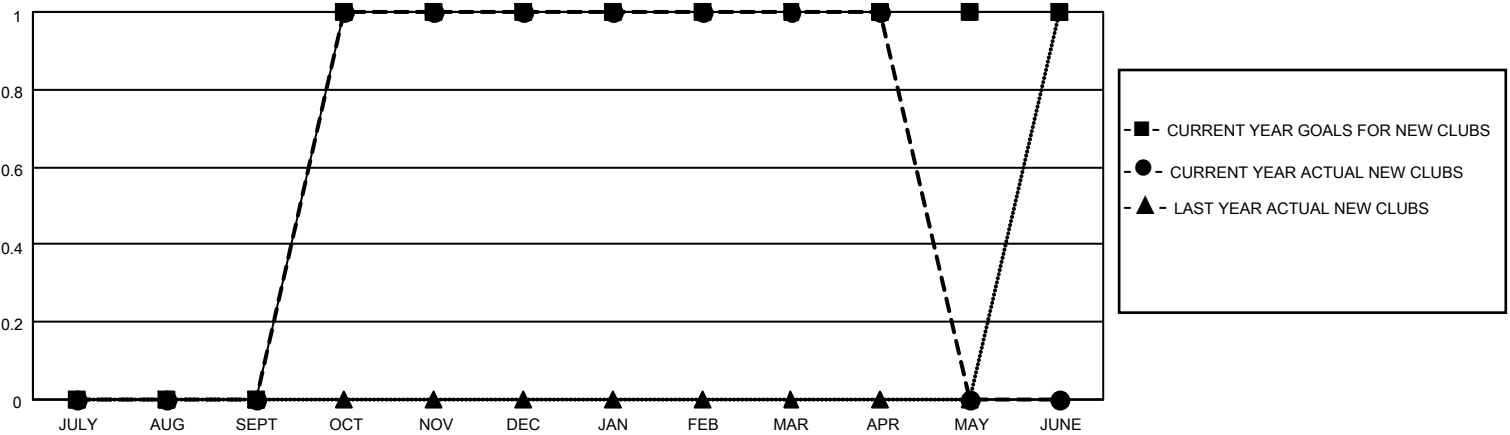
LOCATION IDAHO

GMT CA

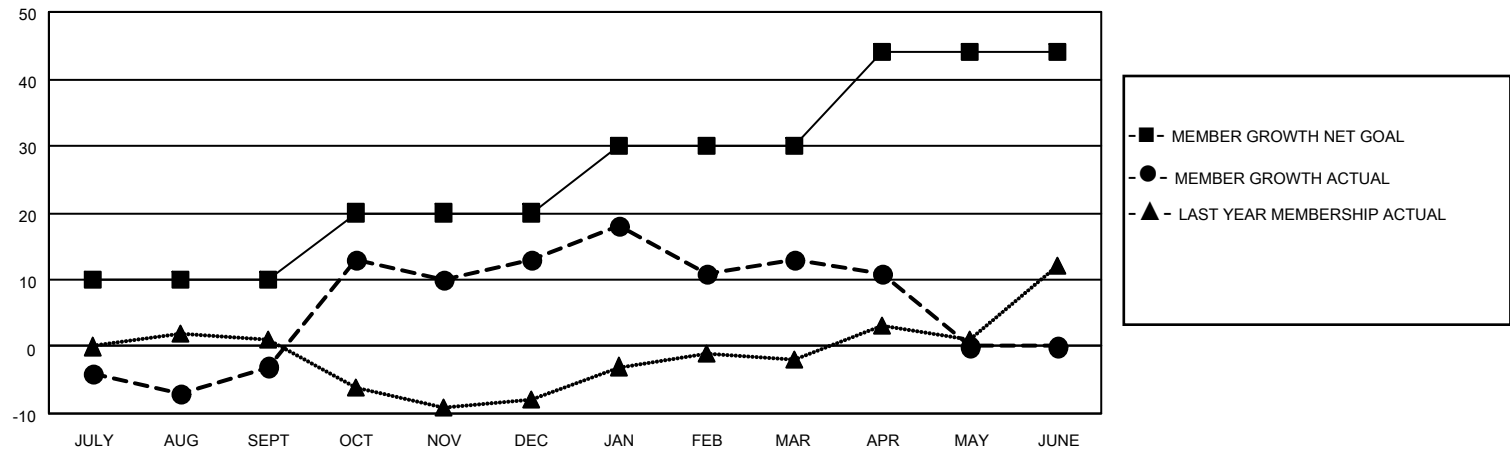
Clubs			
RESULTS FOR 2025-2026			
QUARTER	NEW CLUB GOAL	NEW CLUBS	DROPPED CLUBS
JULY/AUG/SEPT	0	0	0
OCT/NOV/DEC	1	1	0
JAN/FEB/MAR	0	0	1
APR/MAY/JUNE	0	0	0

Members			
RESULTS FOR 2025-2026			
QUARTER	MEMBER GROWTH NET GOAL	MEMBER GROWTH ACTUAL	DROPPED MEMBERS ACTUAL (including transfers)
JULY/AUG/SEPT	10	6	9
OCT/NOV/DEC	10	26	10
JAN/FEB/MAR	10	12	12
APR/MAY/JUNE	14	0	2

GOALS AND ACTUAL NEW CLUBS CUMULATIVE



GOALS AND ACTUAL MEMBERS CUMULATIVE



DROPPED CLUBS: 1	
DROPPED MEMBERS	
DECEASED	1
CLUB CANCELLED	0
OTHER	32
TOTAL	33

11 CLUBS OF 24 ADDED 1 OR MORE NEW MEMBERS

GENDER DISTRIBUTION	
MALE	228 (59.22%)
FEMALE	156 (40.52%)

[CLICK HERE FOR CUMULATIVE MEMBERSHIP DATA](#)

TOTAL FAMILY UNIT MEMBERS	128
FAMILY MEMBERS PAYING HALF DUES	66